



# DEPTFORD TOWNSHIP NEWS

GLOUCESTER COUNTY • NEW JERSEY 08096

## WE ARE BETTER TOGETHER

This newsletter edition will provide you with information about all the workings of our local government. Our administration focuses every day on providing the best in municipal services. Our mission is public safety, clean neighborhoods, great recreation and most of all watching every tax dollar.

Township Council's main function is to ensure that every tax dollar is spent as efficiently as possible. Working with our administration we accomplished this again with a ZERO local tax increase budget. Your property tax dollar supports the county government, the school district, the fire district, the library and then a portion of it supports all local government operations.

We have built tremendous relationships with our fellow elected officials, the School board and Fire Commissioners. This interaction has created a sense of community and working together to create the best in education, public safety and municipal services. We have built strong relationships with our business community also. Our local businesses contribute to our ratable base and create local jobs.

Keeping you informed and communication is the key to our success. Township Council was awarded first place in the State Municipal Public Information Contest. This award validated our efforts to get you information on local government.

Thank you everyone, for working with us and working together during some extremely challenging times. Be well, stay safe and just remember we are better together!



## NEW PICKLEBALL COURTS

If you love pickleball and are looking for a court, this could come as good news for you. Eight new pickleball courts have opened at Fasola Park located at 12 Sycamore Lane in Deptford Township.



Pickleball is one of the fastest-growing sports in America. It was created in 1965, and combines many of the elements of tennis, badminton, and ping-pong.

Mayor Paul Medany said the courts are "excellent additions" to the park. "We're proud of our Township Parks and the opportunities they provide for Deptford Township residents to enjoy the outdoors," he said.

The new courts are part of a larger renovation of Fasola Park which is the largest developed park in Deptford Township. New future renovations include regulation cornhole boards, an adult fitness equipment station, seating area, updated toddler park equipment and new bathrooms in the lower level.

Reach out to our Parks & Recreation Department for more information on Pickleball at (856) 845-0804 or email [deptfordparksandrec@deptford-nj.org](mailto:deptfordparksandrec@deptford-nj.org)

## DEPTFORD ON THE MOVE!

### New Businesses:

- Republic Bank
- Ocean State Job Lot
- Dicks Sporting Goods
- Round One Entertainment
- Hampton Inn Hotel
- Xfinity Store
- Deptford School of Rock
- Pet Urgent Care
- Orange Theory Fitness
- Tesla Supercharger Station

### Coming Soon:

- Super Wawa
- Crunch Fitness
- Inspira Medical Center

FOLLOW US!



@deptfordtownship

[www.deptford-nj.org](http://www.deptford-nj.org)



# DEPTFORD TOWNSHIP NEWS



GLOUCESTER COUNTY • NEW JERSEY 08096

PAGE 2

## BUDGET NEWS

### Message from

DEPTFORD TOWNSHIP  
**Mayor Paul Medany**



Your property tax bill has a breakdown of where your tax dollars go. Local government collects your tax dollars for the School district, the County Government, the fire district and the Library tax. Local government, that is Deptford Municipal Government, keeps on the average 23% or 0.23 cents of your tax dollar, the rest is distributed by State law to the other taxing bodies. With this .23 cents we operate municipal services, trash pickup, street lighting, snow plowing, salaries and benefits. We purchase vehicles, pay insurance, build recreation complexes, purchase open space, pave roads and so much more.

The budget for the year 2021 was challenging due to the business climate. The Council Finance Committee of Bill Lamb and Ken Barnshaw along with the administration crafted a ZERO local tax increase budget, we

did not raise tax dollars this year. Through proper planning year round and knowing the pandemic hit everyone very hard we knew the time was now for tax relief. Every tax dollar must be channeled towards satisfying the critical needs of our residents all while providing the best in municipal services.

We have a five-year revolving finance plan that includes yearly audits, reducing debt and sharing services. Our AA bond rating is one of the best in the State. Our Audits are in complete compliance every year. We maintain an outstanding Fund balance or surplus every year for unforeseen circumstances.

This Council knows that property tax is one of the most concerns among our residents and we want you to know we work on budgeting and spending constantly to provide you with financial stability and the best in services.



**We did it again!**

**Attracting new  
business to  
Deptford  
Township**

### INSPIRA COMING TO DEPTFORD TOWNSHIP!

Inspira Medical is moving in to the old Dicks Sporting Goods store. This is part of our ongoing program to attract medical uses to Deptford. Inspira and the accompanying medical uses will provide good paying jobs, fill an otherwise empty space and provide a much needed service to our community.

- Lowes Home Improvement
- 92.5 XTU
- Mennonite Services (Volunteers)



## SHOUT OUT A HUGE THANK YOU

to the  
volunteers  
who helped  
our town  
residents  
during the  
storm!



## Seeking DEPTFORD HISTORY

We are on the hunt for Deptford historical artifacts, stories, pictures, memorabilia and more. You can gift or lend your Deptford treasure for our history display in the township lobby. Deptford goes back to the 1600's and we want to trace our history. Contact the Township Manager's office with any questions or donations via email [twpmanger@deptford-nj.org](mailto:twpmanger@deptford-nj.org) or (856) 686-2220.





# DEPTFORD TOWNSHIP NEWS



[www.deptford-nj.org](http://www.deptford-nj.org)

PAGE 3

## SENIOR News

Deptford Township Mayor and Council value the safety, health, and welfare of our 55 and over community. Councilman Bill Lamb and Councilman Wayne Love are council liaisons to the Over 55 Community. By listening to their needs we've created community events and programs to better enhance their lives. For a complete list, please go to our website at [www.deptford-nj.org](http://www.deptford-nj.org).

Proudly prioritizing the needs of our senior community, here are just some of the great activities you can take part in and senior clubs and programs you can join.

### Senior Activities, Programs & Clubs:

**Line Dancing** – Come enjoy the music and fun while getting GREAT EXERCISE!

Tuesday (Beginners) 10:00-11:30 AM

Wednesday 10:00-11:30 AM

Cost \$2.00 per class

No registration needed

Deptford Township Community Center

**Tai Chi Class** – Tai Chi develops a union connecting the body, mind and soul – in essence, it's a whole body tune-up.

Thursday 9:00-9:45 AM

FREE

No registration needed

Deptford Township Community Center

**Chair Yoga** – Reduces stress, tension and pain. Enhances flexibility. Improves balance and coordination. Strengthens muscles.

Friday 4:00-5:00 PM

Cost \$3.00 per class

No registration needed

Deptford Township Community Center



**Senior Bingo** – Bingo cards and markers will be sold. Light refreshment will be provided. 2nd Wednesday of the month 12:00-2:30 PM (Doors open at 11:30 AM)

For residents age 55 and over. ID is required. Deptford Township Community Center

**Senior Luncheon** - Tickets are available in the Township Clerk's Office.

Monday, November 1, 2021 12:00-3:00 PM  
Auletto's

**Pickleball** – For more information on our Pickleball Club or courts please contact 856-845-0804 or email [deptfordparksandrec@deptford-nj.org](mailto:deptfordparksandrec@deptford-nj.org)

### Deptford Township Senior Groups:

#### Golden Age Club

Contact Evelyn Iacovone – 856-227-6699

2nd & 4th Thursday of the month @ 12:30 PM

#### Tacoma Club

President: Lin Tenaglia – 856-848-3044

1st Thursday of the month @ 12:30 PM

#### Oak Valley Friendly Seniors

President: Karen Musick – 856-292-3483

4th Tuesday of the month @ 1 PM

#### Bridlewood Club Social Club

President: Liz Curry – 856-220-2730

2nd Tuesday of the month @ 7 PM

## DEPTFORD TWP. YOUTH ORGANIZATIONS

### Deptford Basketball

President, Jayson Mosley

Recreation Center

[www.deptfordbasketball.org](http://www.deptfordbasketball.org)

### Deptford Softball

President, Mike Carducci

Stauffer Fields

[sports.bluesombrero.com/deptfordsoftball](http://sports.bluesombrero.com/deptfordsoftball)

### Deptford Soccer

President, Mike Bonanno

Soccer Complex

[www.deptfordsoccer.net](http://www.deptfordsoccer.net)

### Deptford Little League

President, Don Bozzuffi

Little League Complex

[sports.bluesombrero.com/deptfordll](http://sports.bluesombrero.com/deptfordll)

### Deptford Football and Cheerleading

President, Shawn McLaughlin

Taylor Field

[www.dmspartans.com](http://www.dmspartans.com)

### Oak Valley Athletic Association

(baseball, softball, basketball)

President, Derek Smyser

Oak Valley Little League Complex

[www.oakvalleyaa.com](http://www.oakvalleyaa.com)

### Deptford Wrestling

President, Paul Bachman

Recreation Center

[www.deptfordjrwrwrestling.com](http://www.deptfordjrwrwrestling.com)

### Cub Scouts

Sharon Galda

[sagalda@comcast.net](mailto:sagalda@comcast.net)

609-970-3246

### Boy Scouts

Mike Wintling

856-693-2780

Please call (856) 845-0804 or email [deptfordparksandrec@deptford-nj.org](mailto:deptfordparksandrec@deptford-nj.org) for more information.

\*All Club Meetings are at the Deptford Senior Center located at 1341 Tanyard Road

# DEPTFORD TOWNSHIP NEWS



GLOUCESTER COUNTY • NEW JERSEY 08096

PAGE 4



## DEPTFORD TOWNSHIP GIVES RESIDENTS CONTROL OVER DOOR TO DOOR SALESMAN

In order to enhance public safety, Deptford Council is implementing a "No Knock" ordinance allowing residents to opt out of allowing vendors to knock on their doors. The vendors engaging in this activity can, at best be a nuisance and at times, pose a safety risk to local residents. There have been documented cases where individuals posing as vendors, utility employees etc. have engaged in criminal activity often times targeting senior citizens.

Residents opting to participate can sign up at the Township municipal building and will get an official placard/sign for their front window placing vendors on notice that they are prohibited from soliciting at that residence. Vendors who violated the ordinance will be subject to enforcement by the police and face fines for violating this ordinance. Please check the Township website <https://www.deptford-nj.org/> for further information.

## DEPTFORD POLICE DEPARTMENT IMPLEMENTING SAFETY MEASURE

Taking advantage of State funding, all Deptford Police officers will soon be wearing body worn cameras (BWC) as they patrol the streets of the township. BWC technology will allow police to capture video and audio recordings of all encounters with the public. This footage provides objective evidence of what occurred and will play a crucial role in the public discourse around police accountability.

Whenever safe to do so, police will notify citizens when they are being recorded. They will deactivate a BWC upon the request of a crime victim and refrain from recording to gather information based on First Amendment protected speech. Also, the BWC will not be activated when an officer is in a school, hospital or place of worship when there is not an active investigation. The Deptford Police Department is embracing this new program which will enhance officer safety and accountability.

## BE AWARE OF PRICE GOUGING!

As we clean up from the storm which came through Deptford Township we have been notified of price gouging. Price gouging definition is when retailers and others take advantage of spikes in demand by charging exorbitant prices for necessities, often after a natural disaster or state of emergency.

Report excessive price increases or other disaster-related scams to the Division of Consumer Affairs at (973) 504-6240. Leave your name, contact info, nature of the complaint and the name and address of the business.

## DEPTFORD TOWNSHIP TAX COLLECTION DEPARTMENT

Property tax bills are viewable and payable online at the Deptford Township's website: [www.deptford-nj.org](http://www.deptford-nj.org)

**Taxes are due Feb. 1<sup>st</sup>, May 1<sup>st</sup>, Aug. 1<sup>st</sup>, & Nov. 1<sup>st</sup>**  
There is a 10 day grace period.

### PROPERTY TAX BENEFITS

Please call Gloucester County Tax Assessor's Office for qualifications/application - 856-307-6445.

- \$250 off yearly taxes for qualifying Veteran or Widow of Veteran
- \$250 off yearly taxes for qualifying Senior or Disabled Person or Surviving Spouse/Civil Union Partner
- Property Tax Exemption for qualifying 100% Totally Disabled Veteran

### PROPERTY TAX RELIEF STATE PROGRAMS

**Homestead Benefit:** To ask questions - 1-888-238-1233

Monday thru Friday, 8:30 AM to 5:30 PM

Online info: [www.state.nj.us/treasury/taxation/homestead/geninf.shtml](http://www.state.nj.us/treasury/taxation/homestead/geninf.shtml)

**Senior Freeze (Property Tax Reimbursement):**

To ask questions or order an application- 1-800-882-6597

Online info: [www.state.nj.us/treasury/taxation/ptr/index.shtml](http://www.state.nj.us/treasury/taxation/ptr/index.shtml)

### REMITTANCE METHODS:

Pay by mail, online or in person & **two** citizens drop box for afterhours.

One is located outside the municipal entrance.

One is located in the police station. **NO CASH!**

Mail payments to: Deptford Township Tax Collector's Office  
1011 Cooper Street, Deptford Township, NJ 08096



## NOTES FROM THE COURT



- All municipal court cases are being held virtually via ZOOM. If you have a case, please contact the Municipal Court Office with your email information.
- Municipal Court Phone number 856-686-2230
- Email: [Courtadministrator@deptford-nj.org](mailto:Courtadministrator@deptford-nj.org)
- All payments can be made via the state web site, [NJMCDIRECT.com](http://NJMCDIRECT.com)



# DEPTFORD TOWNSHIP NEWS



[www.deptford-nj.org](http://www.deptford-nj.org)

PAGE 5



DEPTFORD COMMUNITY CENTER  
1219 DELSEA DRIVE

## Fall 2021 Programs Available!

MONDAY THROUGH FRIDAY  
AFTERNOON & EVENING

LEARN  
SPANISH



SPONSORED  
BY DEPTFORD  
TOWNSHIP  
MAYOR & COUNCIL

**PROGRAMS INCLUDE:**

- BEGINNING SPANISH I
- BEER MAKING 101
- COFFEE & CREATIVE TIME
- CHILDREN'S ART CLASSES
- ADULT ART PROGRAMS
- ENCAUSTIC ADULT ART CLASSES
- PHOTO IMAGERY
- BOOKMAKING
- JEWELRY MAKING
- JOURNALS
- BALLROOM DANCING
- DISCO DANCING

**REGISTER  
TODAY!**

\*PLEASE CALL (856)845-0804  
FOR MORE DETAILED INFO ON  
CLASSES & PROGRAMS BEING  
OFFERED INCLUDING PRICING  
AND REGISTRATION.

\*ALL CLASSES AND PROGRAMS WILL BE HELD  
AT THE DEPTFORD COMMUNITY CENTER  
1219 DELSEA DRIVE, DEPTFORD, NJ

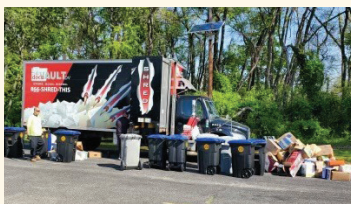
Deptford Township Mayor & Council will host

## ANNUAL DRIVE-THRU SHRED EVENT DAY

Saturday, October 30, 2021 – 9-11 AM

Deptford Community Center – 219 Delsea Dr., Westville, NJ

Remain in your car at all times.  
Place all your documents into a  
box or bag placed in your trunk.  
Proceed through the line, pop  
your trunk and we will shred  
the documents while you wait.



## DEPTFORD FREE PUBLIC LIBRARY

[deptfordpubliclibrary.org](http://deptfordpubliclibrary.org)



### Regular Children's Programs

Now through Nov 18th – Thursdays @ 4 PM - Story Time  
in the Park (weather permitting)

Fall/Winter Story times for Toddlers & Preschool-aged  
children (various days and times)

Lego Club – Wednesdays @ 4 PM

Children's Craft Hour – Tuesdays @ 5:30 PM

### Regular Adult Programs

Crafting with Carol – Once a Month\*

Cardmaking – Once a Month\*

Adult Coloring – Once a Month\*

### Upcoming Events

Sept 25th @ 11 AM – Make It & Take It – Pipe Cleaner  
Bracelets

Oct 9th @ 11 AM – Family Game Time

Oct 23rd @ 11 AM – Make It & Take It – Tissue Paper  
Pumpkins

Oct 23rd @ 2 PM – Parents & Pastries – Purchased  
Pre-packaged Baked Goods

Nov 6th @ 11 AM – Make It & Take It – Paper Strip  
Pumpkin Centerpiece

Nov 20th @ 11 AM – Happy Un-Birthday – Celebrate  
everyone's birthday with stories, games and snacks.

Dec 4th @ 11 AM – Make It & Take It – Reindeer  
Finger Puppet

Dec 18th – Countdown to Noon – For children who may  
not make it to midnight to see New Year's Eve ball drop.  
Games, noise makers, snacks.

TBD in December – Santa Visits

\*Check website for dates & times



# DEPTFORD TOWNSHIP NEWS



GLOUCESTER COUNTY • NEW JERSEY 08096

PAGE 6

## POLLING LOCATIONS IN THE GENERAL ELECTION

The General Election will be on Tuesday, November 2, 2021. The polls will open at 6 AM and close at 8 PM. Please check your sample ballot and look at the location where you need to vote. Don't forget to exercise your right to vote. The Deptford Township Chief Administrator of all elections is Township

Clerk, Dina L. Zawadski, RMC, CMC. Should you have any questions regarding polling locations, voter registration or vote by mail applications, please contact the Clerk's office at 856-686-2203.



Districts #1, 6, 10 & 21	Deptford Municipal Building	1011 Cooper Street, Deptford, NJ
Districts #2, 16 & 22	Deptford Senior Center	1341 Tanyard Road, Deptford, NJ
Districts #3 & 14	Deptford Ambulance Bldg.	2506 Good Intent Road, Deptford, NJ
Districts #4 & 20	Recreation Center	52 Montague Lane, Deptford, NJ
District #5	Deptford Library	670 Ward Drive, Deptford, NJ
District #7	Helping Hand Fire Co.	86 Fisher Avenue, North Woodbury, NJ
District #8	Deptford Public Works Bldg.	1702-1704 Hurffville Road, Deptford, NJ
District #9	Deptford Soccer Complex	1002 Cattell Road, Deptford, NJ
District #11, 12 & 13	Oak Valley Fire Department	595 Princeton Blvd., Oak Valley, NJ
District #15, 17 & 19	Corporal LE Jones VFW	640 Tacoma Blvd., Westville Grove, NJ
District #18	Lakebridge Community Center	21 Knollwood Drive, Deptford, NJ



Early voting is here.

In-Person Early Voting for the General Election begins on Saturday, October 23 through Sunday, October 31st, 2021, Monday-Saturday 10 AM - 8 PM, Sunday 10 AM - 6 PM. No appointment is necessary.

Voting will be conducted on the new voting machines and utilize electronic poll books to sign in voters. Gloucester County voters may go to any of the 5 designated early voter centers.

(See below)

Early Voting Site	Address
Riverwinds Community Center	1000 Riverwinds Dr, Thorofare, NJ 08086
RCSJ Behavioral Science Center	1400 Tanyard Rd, Sewell, NJ 08080
GC Swedesboro Facility	141 Glen Echo Ave, Swedesboro, NJ 08085
Monroe Public Library	713 Marsha Ave, Williamstown, NJ 08094
Chamberlain Student Center at Rowan University	201 Mullica Hill Rd, Glassboro, NJ 08028



### CONNECT WITH DEPTFORD

Deptford is on SDL Portal, an online hub where residents & professionals can access information, check status updates and submit requests 24/7.

- ✓ Register/Renew Pet Licenses
- ✓ Check Permit Statuses
- ✓ Request Building Inspections
- ✓ Apply for Certificates of Occupancy
- ✓ Access Town Data
- ✓ View Property Info
- ✓ And more

**Visit:**  
**[sdl.town/Deptford](https://sdl.town/Deptford)**  
**to get started**

SDL | PORTAL



# DEPTFORD TOWNSHIP NEWS



www.deptford-nj.org

PAGE 7

## FALL LEAF COLLECTION SCHEDULE 2021



### ZONES 1 & 6

Monday	Oct. 25
Tuesday	Oct. 26
Wednesday	Oct. 27
Thursday	Oct. 28
Friday	Oct. 29
Wednesday	Nov. 17
Thursday	Nov. 18
Friday	Nov. 19
Monday	Nov. 22
Tuesday	Nov. 23
Friday	Dec. 10
Monday	Dec. 13
Tuesday	Dec. 14
Wednesday	Dec. 15
Thursday	Dec. 16

### ZONES 3 & 5

Monday	Nov. 1
Wednesday	Nov. 3
Thursday	Nov. 4
Friday	Nov. 5
Monday	Nov. 8
Wednesday	Nov. 24
Monday	Nov. 29
Tuesday	Nov. 30
Wednesday	Dec. 1
Thursday	Dec. 2
Friday	Dec. 17
Monday	Dec. 20
Tuesday	Dec. 21
Wednesday	Dec. 22
Thursday	Dec. 23

### ZONES 2 & 4

Tuesday	Nov. 9
Wednesday	Nov. 10
Friday	Nov. 12
Monday	Nov. 15
Tuesday	Nov. 16
Friday	Dec. 3
Monday	Dec. 6
Tuesday	Dec. 7
Wednesday	Dec. 8
Thursday	Dec. 9
Monday	Dec. 27
Tuesday	Dec. 28
Wednesday	Dec. 29
Thursday	Dec. 30
Monday	Jan. 3

**\*NOTE: PLEASE BE PATIENT, THE SCHEDULE IS SUBJECT TO CHANGE DUE TO WEATHER CONDITIONS.**

• Please remember to keep leaves away from vehicles and not to park on leaf piles so leaf machines will have easy access to the leaves. Leaves must be placed at the curb free of any rocks, branches, twigs, dirt, pet waste, horse manure or other debris in order for them to be vacuumed up easily and not cause damage to machines.

• Leaves not put to the curb for pickup during this scheduled leaf pickup will have to wait until the beginning of the Spring Clean Up Program or our Yard Waste Program to be picked up.

• Please note that our Yard Waste Pickup Program runs all year. Yard waste debris such as grass, flowers, plants, small limbs, and "leaves" are required to be placed in containers or biodegradable paper bags at the curb for pickup.

• Loose leaves placed at the curb, instead of in cans, will only be collected during our scheduled leaf collection programs.

### REMINDER

Place Leaves at Curblane

NO Plastic Bags

NO Sticks or Other Debris

**ZONES:** As noted below, each "Zone" includes several areas & developments, each with varying amounts of leaves. We will be in each zone three (3) times. Each zone will be completed before moving to the next zone. **Every effort should be made to have leaves at curbside before the first day of each scheduled visit to ensure timely pickup. Your cooperation is greatly appreciated.**

**Zone 1:** Blackwood Terrace, Almonesson, Garden City, Sunset Park, Hunter's Gate, Willow Ridge, Woodmere Mews, Heritage Woods, Valley Green Estates. Boundary Limits: Almonesson Road, Rt. 41, Clements Bridge Road, Bull Run Creek and all adjoining residential streets.

**Zone 2:** Westville Grove, Westville Oaks, North Woodbury, Woodbury Gardens, Locust Grove, Blanchard's Landing, Ladd's Landing, Heritage Development, Patriots Ridge. Boundary Limits: Deptford Avenue, Delsea Drive (Rt. 47), Cedar Avenue, Old Broadway & all adjoining residential streets.

**Zone 3:** Oak Valley, Pine Acres, Mantua Terrace. Boundary Limits: Route 45, Deptford/West Deptford borderline to Jersey Avenue, Woodbury Heights Boundary Line.

**Zone 4:** Deptford Leas, Bexhill Farms, Windemere, Stonybrook Homes, Gardenville center, Cooper Village, Almolind Homes, Woodbrook. Boundary Limits: Fox Run Road, Delsea Drive (Rt. 47), Almonesson Road, NJ Turnpike and all adjoining residential streets.

**Zone 5:** Hammond Heights, Jericho, Deptford Terrace, New Sharon, Lake Tract, Narraticon, Barlow Tract, Country Club Estates, East Woodbury, Lakebridge, Brookmill Homes, Sage Hill. Boundary Limits: Delsea Drive (Rt. 47) - Cooper Street, Glassboro Road, Tanyard Road, Cattell Road, Highland Avenue and all adjoining residential streets.

**Zone 6:** Sewell, Lakes of Bankbridge, East Wenonah, Loucroft Farms, Bridlewood, Tanyard Oaks. Boundary Limits: Tanyard Road, Salina Road, Bankbridge Road, Delsea Drive (Rt. 47) and all adjoining residential streets.



# DEPTFORD TOWNSHIP NEWS



GLOUCESTER COUNTY • NEW JERSEY 08096

PAGE 8

## SNOW REMOVAL

The Township of Deptford needs the help of its citizens to efficiently remove snow and ice from the roadways. We need everyone to keep all vehicles off the street. This includes all registered vehicles and trailers. We intend to plow curb to curb when possible. We have over 500 roads to plow locally and we need 100% cooperation. The following describes the Township's method of snow removal and what you can do to help.

- **The main roadways (those that carry the most traffic) are given first priority for salting and plowing.**

During a heavy snowfall, concentration is placed on the main roadways until they are cleared at which time the secondary roads are attended to. Cul-de-sacs, or circles, are the last to be plowed.

- **Cul-de-sacs are among the most difficult streets to plow and require the greatest amount of time.**

The Public Works department prefers to push the snow off the road leaving the cul-de-sac free from snow piles that could melt and cause icing conditions. This greatly reduces hazardous conditions and prevents pot holes from forming.

- **The Public Works department trucks plow as close to the curb-line as possible.**

This creates a wider roadway for travel and parking. During heavier snowfalls, there are times when snow may get pushed into already cleared driveways and sidewalks. Following the diagram below when shoveling your driveway will help avoid the driveway getting closed during plowing.

- **The snow that is in front of a plow will unload whenever it passes a clear area.**

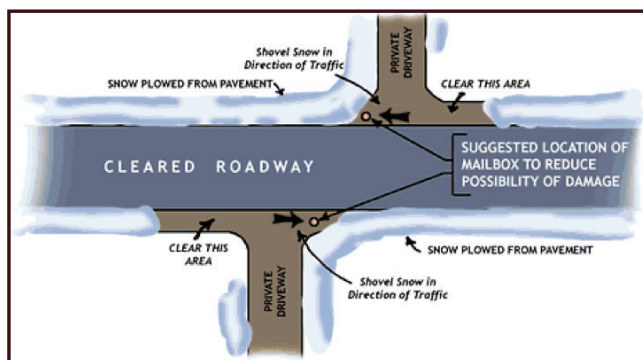
Providing a clear area on the side of the driveway where the plow will be traveling, will allow the snow to unload in the clearing before your driveway instead of in your driveway.

- **Cars parked on the street become a major problem during inclement winter weather.**

As the plow goes around the parked vehicles, it leaves piles of snow on the roadway. To avoid this, please remove vehicles from the street during snowstorms, in accordance with Township Ordinance.

- **Please avoid driving when it is not absolutely necessary during snow plowing operations.**

Snow plowing, that is normally a routine function, becomes difficult with stalled, stuck or parked cars in the street.



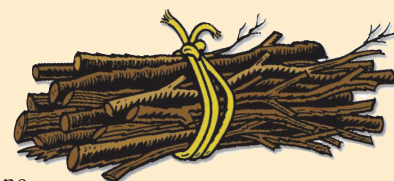
**PLEASE DO NOT THROW  
SNOW INTO THE STREET  
FROM YOUR SIDEWALK  
AND DRIVEWAY**

## BRANCH/LOG COLLECTION



For removal of branches & logs please click [Online Citizens Request Form](#) or call 228-4719 with your location so that pick up may be scheduled.

- Logs should be cut into 2 foot sections and be placed neatly at curblines.
- Branches should be cut into 5 foot sections and be neatly placed at the curblines.
- Tree roots and stumps must be free of dirt and cut into 2 foot sections for easy removal.



Please be advised that lot clearing is the responsibility of the property owner and will not be collected by the Public Works Department.



# DEPTFORD TOWNSHIP NEWS



[www.deptford-nj.org](http://www.deptford-nj.org)

PAGE 9

## EMERGENCY INFORMATION

Please help us to help you in emergencies. Get an Emergency Action Plan (EAP) for your family, your home and for yourself. Make sure we can see your house number. This is critical in emergencies especially when minutes can count on saving a life. Display your house number where our first responders can clearly see it especially at night. Lock your car doors at night, this is easy with key fobs that most cars are equipped with. Put up motion detector lights. Use the Police non-emergency number (856-845-2220) to call in any issues that do not require a 911 call. Start a neighborhood watch, our police department can assist you with this.

### BELOW ARE SOME EMERGENCY PHONE NUMBERS:

**PSE&G** - 1-800-436-7734 - [pseg.com](http://pseg.com)

#### ATLANTIC CITY ELECTRIC

1-800-642-3780  
[atlanticcityelectric.com](http://atlanticcityelectric.com)

#### SOUTH JERSEY GAS

1-856-881-7000  
[southjerseygas.com](http://southjerseygas.com)



## RESIDENT ALERT NOTIFICATIONS

Deptford Township residents can now sign up to receive Emergency Alert Notifications.

Go to **[gloucesteralert.com](http://gloucesteralert.com)**.

Click on "Sign Up" button to add your information to this notification system.

You will be asked to create an account:



- Create a Username and Password
- Usernames must be a minimum of 4 acceptable characters. Acceptable characters are: uppercase and lowercase letters, numbers, period, dash (-), underscore (\_), and at symbol (@). No other characters or symbols are permitted at this time.
- Password must be 8 to 64 characters long and contain at least one letter and one number. Special characters are permitted, but limited to !@#\$%^&\*(). Select a security question and enter its answer.
- Enter a Registration Email Address. This address is used to send temporary passwords, if you forget your credentials.
- Accept the Terms of Use by checking the box
- Click "Create Your Account"



## ANNUAL TREE LIGHTING CEREMONY

December 3rd

Mayor and Council invite you to the Annual Tree Lighting on Friday, December 3rd beginning at 6:00 PM at the Recreation Center. Put on your hats and gloves for this wonderful fun filled outdoor event complete with Santa, hayrides, outdoor movies, hot chocolate, cookies and more. All children will receive a complimentary photo with Santa and a ticket for a surprise gift.

## HOUSE DECORATING CONTEST

It is that time of year to get into the holiday spirit with our Christmas House Decorating Contest. Show your holiday spirit by participating in our Christmas House Decorating contest, deck the halls, trim the trees and enter by December 15, 2021 to win first, second, third or fourth place.

For additional information please call 856-845-0804.  
Or email: [deptfordparksandrec@deptford-nj.org](mailto:deptfordparksandrec@deptford-nj.org)



To register fill out & mail the entry form below to:

Deptford Township  
Parks & Recreation  
1011 Cooper Street  
Deptford, NJ 08096

## CHRISTMAS HOUSE DECORATING ENTRY FORM

Name \_\_\_\_\_

Phone \_\_\_\_\_

Address \_\_\_\_\_

Town \_\_\_\_\_ Zip \_\_\_\_\_



# DEPTFORD TOWNSHIP NEWS



GLOUCESTER COUNTY • NEW JERSEY 08096

PAGE 10

## RECYCLING NEWS

Protecting our environment and open space is one of township council's priorities. Below you will find information on recycling. Please help us reduce costs by following the recycling rules. We are working on storm water management projects to protect our streams and waterways. We were one of the first communities to require garbage disposals in new construction to keep food waste out of the trash stream. Working with the DTMUA we enacted a stringent grease trap ordinance to protect our waste systems. We have one of the only municipal building rain gardens in the State of New Jersey.

Our Open Space Committee along with our environmental council liaisons, Councilman Phil Schocklin and Councilman Ken Barnshaw, recently met to explore more open space purchases to add to our current inventory. We feel providing passive recreation and protecting wildlife is not only a responsibility but ensures future generations the opportunity to enjoy our natural environment. Thank you for helping us protect our environment.

### **Single Stream Recycling** - What is single stream recycling?

Single stream (also known as fully commingled) recycling refers to a system in which all paper fibers and containers are mixed together into one container instead of being sorted into separate commodities (newspaper, cardboard, plastic, glass, etc.) by the resident and handled separately throughout the collection process. In single stream, the resident can now place all recycling material into the same container.

### **MATERIAL THAT MUST BE RECYCLED**

#### **Corrugated Cardboard**

Large cardboard boxes must be cut down or flattened in order to be placed in tote.

#### **Newspaper**

Newsprint (including the advertisements found in newspapers)

#### **Mixed Paper**

Mail, magazines, office and colored paper; regular and window envelopes; receipts; glossy inserts; telephone books; chipboard and paperback books; greeting cards; brown craft paper bags; and non-metallic wrapping paper

#### **Glass Bottles & Jars**

Clear, green and brown bottles and jars. Rinse out bottles and jars and place in tote.

#### **Aluminum, Steel & Tin Cans**

Beverage and food cans. Rinse cans and please in tote.

#### **Plastic Containers Only**

Beverage and laundry containers with #1 PETE and #2 HDPE symbols (located on the bottom or side of the container). Rinse out containers.



Items that will NOT be recycled under this program are toys, plastic bags, bubble wrap, ovenware, ceramic and polystyrene cups and plates, styrofoam, pots and pans, baking pans, drinking glasses, mirrors, automobile windshields, light bulbs, window glass, wax coated boxes, pizza boxes, 6-pack beverage holders, flower pots, plastic bags, comforters, pillows, rugs and all other miscellaneous plastics. All these items must be placed in household trash.

### **Mixed Paper/Cardboard/Chipboard etc.**

All Cardboard and Chipboard MUST BE RECYCLED. Large cardboard boxes need to be broken down so that they can be collected.

Here are some examples of accepted materials: Newspaper, junk mail, office type paper, corrugated cardboard, cereal boxes, etc.

### **Recycling Toters Regulations:**

- Place the Toter at curbside no earlier than 6pm the night before your scheduled pick up and no later than 6AM on the day of your scheduled pickup.
- The Toters must be placed no further than 3 feet from the edge of the street with the wheels facing your house and the front of the Toter facing the street.
- Toters must not be placed behind cars, mailboxes, telephone poles or any obstruction that will make it difficult for the operator to pick it up.
- These Toters are meant for recycling services only.
- Recycling should include: Cans/ Bottles/ Plastics/ Cardboard/ Paper products.
- Cut up large pieces of cardboard so they will fit inside the container easily.
- Do not jam large piece of cardboard inside the Tote, this could stop the Tote from emptying when dumped into the truck.
- Do not place inside the Toter: Trash/ Grass/ Wood/ Dirt/ Paint cans/ Hazardous chemicals Styrofoam, vinyl or any other materials that are not part of the Deptford Township's Recycling Program.
- All recycling must be placed inside the Toter for collection. If you have excessive amounts of cardboard you must flatten, bundle and place at the curb for Monday pickup. Residents need to call the Public Works Department to have a work order placed for pickup. If you have any questions please call 856-228-4719 between 7:00 AM – 3:30 PM.





# Save the Date!

## UPCOMING EVENTS



### OCTOBER 2021

- Oct 9 • Fall Festival • Andaloro Farm • 2PM-8PM
- Oct 13 • Senior Bingo • Community Center • 12PM - 2:30PM
- Oct 18 • Fund for Deptford Families • Adelphas • 7PM - 9PM
- Oct 28 • Trunk or Treat Drive Thru • Recreation Center • 6PM - 8PM
- Oct 30 • Shred Event • Community Center • 9AM - 11AM

### NOVEMBER 2021

- Nov 1 • Senior Luncheon • Auletto's • 12PM - 3PM
- Nov 2 • Election Day - Don't forget to vote!
- Nov 10 • Bingo • Community Center • 12:00PM - 2:30PM
- Nov 11 • Veterans Day (Offices closed)
- Nov 25 & Nov 26 • Thanksgiving (Offices closed)



### DECEMBER 2021

- Dec 3 • Annual Tree Lighting • Recreation Center • 6PM
- Dec 8 • Senior Bingo • Community Center • 12PM - 2:30PM
- Dec 11 • Pictures with Santa at the Dog Park • 10AM - 12PM
- Dec 16 • Senior Winter Wonderland • Deptford Community Center • 6PM
- Dec 24 • Christmas Eve (Offices closed)
- Dec 25 • Merry Christmas
- Dec 31 • New Year's Eve (Offices closed)



### JANUARY 2022

- Jan 1 • Happy New Year
- Jan 10 • Come Fly With Us Contest • Recreation Center • 6PM
- Jan 11 • Martin Luther King, Jr. Ceremony • Recreation Center • 6PM





**(856) 845-5300**



**Paul Medany**  
Mayor



**Tom Hufnell**  
Deputy Mayor



**Phil Schocklin**  
Councilman



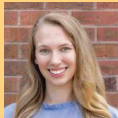
**Wayne Love**  
Councilman



**Bill Lamb**  
Councilman



**Ken Barnshaw**  
Councilman



**Mackenzie Belling**  
Councilwoman

## **Township of Deptford**

1011 Cooper Street  
Deptford, New Jersey 08096

PRSRTSTD  
U.S. POSTAGE  
PAID  
Permit No. 12  
Deptford, NJ 08096



**FOLLOW US!**  
@deptfordtownship



# DEPTFORD

## TOWNSHIP NEWS

[www.deptford-nj.org](http://www.deptford-nj.org)

### MUNICIPAL CONTACTS

#### **The Deptford Free Public Library**

670 Ward Drive, Deptford  
(856) 848-9149  
Hours of Operation:  
Monday - Thursday 10 AM - 9 PM  
Friday - Saturday 10 AM - 4 PM  
[www.deptfordpubliclibrary.org](http://www.deptfordpubliclibrary.org)

#### **Deptford Township MUA**

898 Cattell Road, Deptford  
(856) 415-1111  
Hours of Operation:  
Monday - Friday 8:30 AM - 4:30 PM  
Exec. Director - Michael Cusick  
[www.deptford-nj.org/mua](http://www.deptford-nj.org/mua)

#### **Deptford Township Public Works**

1702-1704 Hurffville Road, Deptford  
(856) 228-4719  
Hours of Operation:  
Monday - Friday 8:30 AM - 4:30 PM  
[www.deptford-nj.org](http://www.deptford-nj.org)

#### **Board of Education**

2022 Good Intent Road, Deptford  
(856) 232-2700  
[www.deptfordschools.org](http://www.deptfordschools.org)

#### **Deptford Township Fire Department**

1370 Delsea Drive, PO Box 5535,  
Deptford - (856) 848-3098  
Hours of Operation:  
Monday - Friday 8 AM - 5 PM  
Chairman - Michael J. White  
Board of Fire Commissioners  
[www.deptfordfd.org](http://www.deptfordfd.org)

#### **Deptford Township Police Department**

1011 Cooper Street, Deptford  
(856) 845-2220  
Chief of Police - Frank Newkirk  
[www.deptford-nj.org](http://www.deptford-nj.org)

### MUNICIPAL DEPARTMENTS

#### **Township Manager**

Thomas Newman, Jr. (856) 686-2220

#### **Township Clerk**

Dina Zawadski (856) 686-2203

#### **Chief of Police**

Frank Newkirk (856) 845-6300

#### **Public Works**

Rob Ritterson (856) 228-4719

#### **Chief Financial Officer**

Kimberly Kwasizur (856) 686-2200

#### **Tax Collector**

Fran Iliadis (856) 845-5300 ext. 2255

#### **Construction Official**

Christian Romano (856) 845-5300 ext. 2242

#### **Recreation Director**

Charlie Kirchner (856) 845-0804

#### **Municipal Court Administrator**

Shannon Sawyer (856) 686-2229